


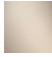

TARA Deck valve anti-clockwise closing - Brushed Platinum

TARA

20 000 883

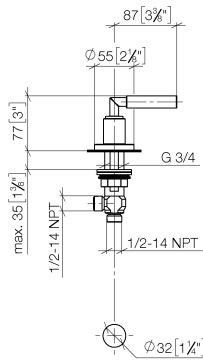
- hole diameter 32 mm
- rosette Ø 55 mm



| | | |
|---|-------------------------------|---------------|
|  | Brushed Platinum | 20 000 883-06 |
|  | Brushed Champagne (22kt Gold) | 20 000 883-46 |
|  | Champagne (22kt Gold) | 20 000 883-47 |

20 000 883

mm [inches]



Flow rate chart



Codes & Standards

ADA

ASME
A112.18.1/CSA
B125.1



TARA Deck valve anti-clockwise closing - Brushed Platinum

TARA

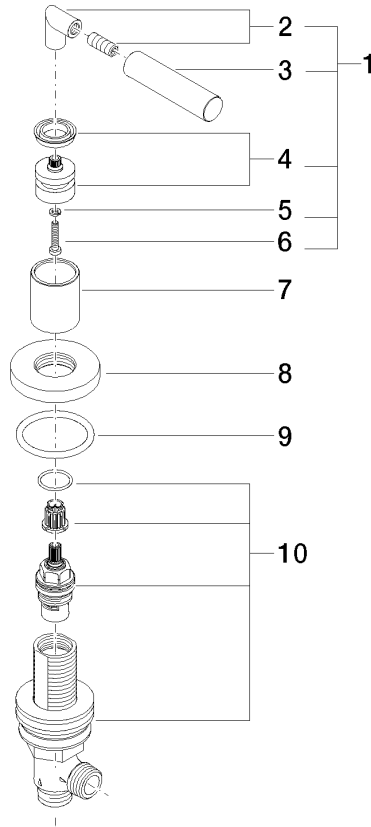
20 000 883

Certificates

IAPMO_4976 (5). WRAS_2112061.

20 000 883

Parts for other finishes can be found here: [Brushed Champagne \(22kt Gold\)](#)



Spare parts list

| No. | Item Number | Name | Quantity used | Delivery time |
|-----|--------------------|------------|---------------|---------------|
| 1 | 04 20 88 052 00-06 | handle | 1 | 10 |
| 2 | 04 18 20 022 00-06 | angle | 1 | 10 |
| 3 | 09 20 88 052-06 | handle | 1 | 10 |
| 4 | 90 12 12 007 00-06 | base | 1 | 10 |
| 5 | 90 30 11 029 00 90 | disc | 1 | 2 |
| 6 | 90 30 30 075 00 90 | screw | 1 | 2 |
| 7 | 09 21 02 140-06 | sleeve | 1 | 10 |
| 8 | 09 27 89 105-06 | rosette | 1 | 10 |
| 9 | 90 14 10 043 00 90 | seal | 1 | 2 |
| 10 | 90 17 11 040 30 90 | side panel | 1 | 2 |